

WOW this year has flown by! I feel like I've blinked and here we are nearing Christmas! There is much to celebrate from this year. Thank you for your amazing prayer and support over this year. Thanks for those who have had coffees with me, prayed with me, gave an encouraging word or gift, helped me to see the big picture, and pointed me toward Jesus. I really could not go on this journey without you!

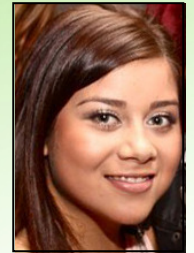
MAD Camp

From my last newsletter, I shared that I was about to go on MAD Camp with 5 student leaders from Caroline Springs College, and many other young people from the western suburbs. WOW – it was such an amazing and moving camp! Many young people shared deeply about what was going on in their lives and were so open to our camp theme of making a difference! A couple of young people responded to following Jesus for the first time, and many responded seriously to making a difference in their world once they came back from camp. One of the students put together a Facebook group for the campers and it's still buzzing with ideas and news about how they are making a difference! Thank you for your prayers for this camp! It made a huge impact on the young people and the leaders who attended.

Melton Update

Unfortunately due to funding constraints, we have decided to finish up the Melton Community Youth Worker Role. The Uniting Church's BOMAR (Board of Mission and Resources) grant which funded a large proportion of the role has come to an end. We were not able to find ongoing funding to fill the large gap left from the BOMAR grant.

It's with regret that we say goodbye to Paulina Soto-Fonseca from her Melton role. Paulina brought much energy, passion and enthusiasm to the role and spread the vision of ELEVATE to those around her. Please pray for Paulina during this time as she discerns her next chapter in ministry.



Even though the role itself will come to an end, there are many passionate and committed volunteers who still want to continue to work in the school. We are looking into what is feasible to run for next year and thinking about whom to appoint as directors for the schools ministries. It's exciting to see the commitment from these volunteers who are passionate about their local schools.



Going MAD at MAD Camp!

Left picture: Campers during our Community Action Day—cleaning up a park in Bairnsdale.



Internships

It looks like we'll be having quite a few ELEVATE interns next year! With our new partnership with Praxis (who will be delivering the Diploma of Youth Work as part of the internship), we've got more possible interns. Look out for news early next year!



Chaplaincy

Diving into this new direction into Chaplaincy has been keeping us busy! There have been school principals and staff to speak to, government guidelines to get our heads around, training and supervision structures to shape, potential chaplains to accredit and much more! It's about looking at the big picture, yet making sure we have our eye on the details as well. Particularly pray for Kylie Hunter (Team Leader) and myself as we navigate through the Chaplaincy world!

Staff Changes at SU...

We will be farewelling Rob Wolsley from his role as Northern Regional Coordinator. He's accepted a position up in Qld!

Mark Francis, will also be leaving us after being on SU Staff for 10 years. He will be finishing up in his role as the Lakes Camp Manager at the end of the year.



I hope you have a blessed Christmas and an even more amazing 2012!

Charlene

charlened@suvic.org.au
0431 123 652



DATES for early 2012

- Jan 6 – 26: I'm in the Philippines for my sister's (Camille) wedding
- Jan 16: Interviews with potential interns
- Jan/Feb: Going through accreditation process with potential chaplains
- Feb 13 – 19: 1st intensive block for interns
- Mar: 2nd round of Chaplaincy government funding applications closes
- Term 2: Chaplains employed in schools
- Apr 21: Elevate State-wide Training Day

Name

Address

..... Postcode

Phone:(H) (M)

Email:.....

Church attended

- I will pray regularly
- Please post/email me Charlene's quarterly team support letter
- I would like to talk to Charlene about being part of an ELEVATE team on the ground

Online donations to support Charlene:

www.suvic.org.au/teamsupport/charlene

With God's help, I will give: Amount \$

monthly quarterly bi-annually yearly

Please debit my card regularly as indicated below

(A unit of Friend Support is \$240 per annum and is \$100% Tax Deductible)

OR please find enclosed my gift of:

\$50 \$100 or \$

(Please make cheques payable to SU Victoria)

or debit my Visa Mastercard American Express

Card No:

Name on card

Signature

Expiry Date: